

ODT Vision®

Developer Guide

Addendum 1.0

AS/400® Connectivity

ODT Vision®

Developer Guide

Addendum

AS/400® Connectivity

Copyright Vision Voice Vantage, Inc. 2007

CHAPTER 1 - INTRODUCTION TO THE ODT VISION® TO AS/400® CONNECTIVITY GUIDE

NOTES AND ACKNOWLEDGMENTS 7

ABOUT THIS MANUAL 10

WHAT IS THE ODT VISION® TO AS/400® CONNECTIVITY? 10

SYSTEM REQUIREMENTS 10

PRODUCT SUPPORT 11

SOFTWARE PROGRAM LICENSE AND WARRANTY 11

 Customer Agreements 11

 License 11

 Term 11

 Limited Warranty 11

 Limitations of remedies 11

 General 12

CHAPTER 2 - ODT VISION® TO AS/400® CONNECTIVITY INSTALLATION 15

ODT VISION® TO AS/400® CONNECTIVITY INSTALLATION 17

Before installing the ODT VISION® to AS/400® Connectivity software 17

 Hardware installation 17

 Software installation 17

PREPARING CLIENT ACCESSS® FOR THE CONNECTION 18

 Configuration of Client Accesss Router 18

 Configuration of Client Accesss Display Sessions EHLAPI short name 18

Preparing Client Accesss® for use 18

Additional Changes to Client Accesss 21

Getting Help in Setting Up Client Accesss® 22

CHAPTER 3 - SCRIPT LANGUAGE REFERENCE 24

ODT VISION® TO AS/400® CONNECTIVITY OPERATIONS 26

ODT VISION® TO AS/400® CONNECTIVITY OPERATIONS 26

AS/400® Connection 26

Screen Scraping 27

Cursor Movement 28

Field Attributes 29

Endif 29

Field Data Entry 30

Keyboard Input 31

Keyboard Mnemonics for SessionSendKeys Operation 32

ODT VISION® TO AS/400® CONNECTIVITY SYSTEM VARIABLES 36

Session Error variable 36

Session Indicator variables 37

Session Cursor variables 38

Session Field variable 39

SUB-FILE REVIEW 39

AS400 TEST UTILITY 39

HELPFUL HINTS 40

ODT VISION® TO AS/400® CONNECTIVITY SYSTEM LIMITATIONS 40

ODT VISION® TO AS/400® CONNECTIVITY ERROR CONDITIONS 41

Error Codes 41

Chapter 1 - Introduction to the ODT VISION® to AS/400® Connectivity Guide

NOTES AND ACKNOWLEDGMENTS	1-9
ABOUT THIS MANUAL.....	1-10
WHAT IS THE ODT VISION® TO AS/400® CONNECTIVITY?	1-10
SYSTEM REQUIREMENTS.....	1-10
PRODUCT SUPPORT	1-11
SOFTWARE PROGRAM LICENSE AND WARRANTY	1-11

Notes and acknowledgments

Information in these manuals and features of the ODT VISION® system are subject to change without notice and does not represent a commitment on the part of Vision Voice Vantage, Inc.. The software described in this manual are furnished under a license agreement and may only be used or copied in accordance with the terms of the agreement. It is against the law to copy the software to any medium except as specifically allowed in the license agreement. The licensee may make copies of the software for backup purposes only. No part of this manual or software may be reproduced or transmitted in any form or by any means, electronic or mechanical, including photocopying, recording, or by fax transmittal for any purpose other than the licensee's personal use, without the express written permission of Vision Voice Vantage, Inc..

©2007 Vision Voice Vantage, Inc.. All rights reserved.

All names and addresses contained in this manual and the accompanying software are part of a completely fictitious scenario, and are only included to document the use of this product.

Microsoft, the Microsoft logo, MS, MS-DOS, FoxPro, and Access are registered trademarks and Windows is a trademark of Microsoft Corporation in the USA and other countries.

IBM and AS/400 are registered trademarks of the International Business Machines Corporation.

Client Access 2000 is trademark of Wall Data Incorporated

All other product names and services identified in this manual are trademarks or registered trademarks of their respective companies and are used throughout this manual in editorial fashion only. No such uses, or the use of any trade name, is intended to convey an endorsement or other affiliation with Data Transfer Technology Inc.

About this manual

This manual is designed to assist you in the installation, usage, and maintenance required for the ODT VISION® to AS/400® connectivity. This manual assumes that you have a working knowledge of the ODT VISION® system, the AS/400®, PC support, and Client Access® emulation software for Windows. See the appropriate manuals that came with these products for more information.

What is the ODT VISION® to AS/400® Connectivity?

Some ODT VISION® telephony applications may require data that is stored on an AS/400®. This data could be exported from the AS/400® using PC Support file transfer which would then be imported into the ODT VISION® database using the Microsoft Access. The problem with this method is that the data is only as current as the last time the files were downloaded. An example might be a price-lookup telephony application. Customers could call in and get the latest pricing on items in your inventory by using their touch-tone phone. Since this data was “downloaded” to the PC only once a day, any changes that were made to the pricing file since the last download would be unavailable to most telephony applications.

Some ODT VISION® telephony applications may collect caller information that may need uploaded to the AS/400® for processing. This data may have been collected in a Flat-ASCII file or a database file that would need exported using the ODT VISION® Data Manager, and then “uploaded” to the AS/400® for processing. The problem with this method is that the data can not be processed until a “shutdown” of the telephony applications has occurred. An example might be an order entry telephony application. Customers could call in and place orders by using their touch-tone phone. Since this data will have to be uploaded to be processed, there would be no way to easily determine certain information such as current stock availability.

Using the ODT VISION® to AS/400® Connectivity package, a ODT VISION® application can access information from, and provide information to the AS/400® data directly through existing AS/400® programs. It does this by requesting information from the caller and then “keying” that information directly into an existing AS/400® data entry program. Also, information can be read directly from the AS/400® screens to give information back to the caller using a method called “screen scraping”. The programs to be used with telephony applications can be existing entry or inquiry programs or whole new programs that were created just for the telephony application. This method of interfacing a telephone directly to the AS/400® allows information to be current, and requires no daily intervention by an operator.

System requirements

- An existing ODT Vision system with at least one functioning phone board. (See the ODT VISION® system manual for more information)
- Client Access ® compatible emulation or network card installed.
- Client Access® for Windows installed.

Product support

Product technical support is available through your ODT VISION® representative. Call Vision Voice Vantage, Inc.. at (614) 985-3814 if you do not know the name of your ODT VISION® representative.

Software program license and warranty

Customer Agreements

Carefully read the following terms and conditions before opening the diskette envelope. Opening the diskette envelope indicates your acceptance of these terms and conditions. If you do not agree with the terms, you should promptly return the complete ODT VISION® system hardware and software package including the unopened diskette envelope and all original packing material, and your money will be refunded.

Vision Voice Vantage, Inc.. (hereinafter referred to as VVV) provides this software and licenses its use in the United States. You assume responsibility for the selection of the software to achieve the desired results and for the installation, use, and results obtained from the software.

License

You may use the program on any machine that you own or use and may copy the program into any machine readable or printed form for backup support of your use of the program. You may not use, copy, modify, sublicense, or otherwise transfer the software of any copy, modification or merged portion, in the whole or in part, except as expressly provided for in this license. If you transfer possession of any copy, modification, or merged portion of the program to another party, your license is automatically terminated and any attempted sublicense, assignment or other transfer is null and void.

Term

The license is effective until terminated. You may terminate it at any time by destroying the software along with all copies, modification and merged portions in any form. It will also be terminated upon conditions set forth elsewhere in this agreement if you fail to comply with any term or condition of this agreement. You agree upon such termination to destroy the software together with all copies, modifications and merged portions in any form.

Limited Warranty

This program is provided "as is" without warranty of any kind, either expressed or implied, including but not limited to the implied warranties or merchantability and fitness for a particular purpose. The entire risk as to the quality and performance of the software is with you. Should the program prove defective, you (and not ODT nor its representative) assume the entire cost of all necessary servicing, repair or correction. Some states do not allow the exclusion of implied warranties, do the above exclusion may not apply to you. This warranty gives you specific legal rights and you may also have other rights that vary from state to state. ODT does not warrant that the features contained in this software will meet your requirements nor that the operation of the software will be uninterrupted or error free. However, ODT does warrant the diskette on which the program is furnished to be free from defects in materials and workmanship under normal use for a period of ninety (90) days from the date of delivery to you as evidenced by a copy of your receipt.

Limitations of remedies

ODT's entire liability and your exclusive remedy shall be the replacement of any diskette not meeting with ODT's warranty described above and which is returned to ODT with a copy of your payment receipt, or if ODT is unable to deliver a replacement diskette which is free of defects in materials or workmanship, you may terminate this agreement by returning the software and any accompanying hardware and your money will be refunded.

In no event will ODT be liable for any damages including lost profits, lost savings, or other incidental or consequential damages arising from the use or inability to use the software even if ODT has been advised of the possibility of such damages, or any claim by any other party. Some states do not allow the limitation or exclusion of liability for incidental or consequential damages, so the above limitation or exclusion may not apply to you.

General

This agreement shall be governed by the laws of the State of Ohio. Should you have any questions concerning this agreement, you may contact ODT in writing. You acknowledge that you have read this agreement, understand it and agree to be bound by its terms and conditions. You further agree that it is the complete and exclusive statement of agreement between you and ODT which supersedes any proposal or prior agreement, oral or written, and any other communications between you and ODT relating to the subject matter of this agreement

Chapter 2 - ODT VISION® to AS/400® Connectivity Installation

ODT VISION® TO AS/400® CONNECTIVITY INSTALLATION	2-17
<i>Before installing the ODT VISION® to AS/400® Connectivity software</i>	2-17
PREPARING CLIENT ACCESS® FOR THE CONNECTION	2-18
<i>Preparing Client Access® for use</i>	2-18
<i>Additional Changes to Client Access</i>	2-21
<i>Configuration of APPC Connection</i>	Error! Bookmark not defined.-Error! Bookmark not defined.
<i>Getting Help in Setting Up Client Access®</i>	2-22

ODT VISION® to AS/400® Connectivity Installation

Before installing the ODT VISION® to AS/400® Connectivity software

Hardware installation

The following hardware products must be installed and functioning before running the setup for the connectivity option:

- ⇒ Phone Board(s) (See the ODT VISION® manual for more information.)
- ⇒ ODT VISION® parallel port “key”
- ⇒ 5250 emulation or network card is installed and the unit is attached to the AS/400®.

Software installation

The following software products must be installed and functioning before running the setup for the connectivity option:

- ⇒ ODT VISION® system software (See the ODT VISION® manual for more information.)
- ⇒ IBM AS/400® PC Support (Optional if you do not plan to install the sample AS/400 programClient Access® emulation software for Windows)

Preparing Client Accesss® for the connection

Configuration of Client Accesss Router

- Go To the Client Accesss Administrative Tools program group
- Select AS/400 Communications
- Configure Interface
- Configure Link type and properties
- Configure Security

Configuration of Client Accesss Display Sessions EHLLAPI short name

ODT VISION® uses EHLLAPI connection provided by Client Accesss® to access AS400® sessions during a call. The following section will show you how to prepare the emulation software for the EHLLAPI connection.

Preparing Client Accesss® for use

You must create a Client Accesss® Display Session for each phone line that will be attached to the ODT VISION® system. Create and open a Display Session off of the Client Accesss Router for each phone line installed in your VRU System.

Configure PC5250

System name:

Workstation ID

Use Computer name Add prefix to indicate printer or display

Use Windows user name Avoid duplicate names on this workstation

Specify workstation ID Avoid duplicate names with other workstations

Truncate:

Beginning characters Ending characters

Type of emulation

Display Size:

Printer

Bypass signon

Auto-reconnect

Host code-page:

Port number:

To create a new EHLLAPI session, click on the “Options” pull down menu from the display Window.

Select API menu from Options pull down menu. Scroll “Session Short Name” to value for EHLLAPI to match your line.

Enter a 1-character EHLLAPI short name in the space provided for each line. Usually you would start with a short name of A for line 1, B for line 2, and so on. All short names need to be upper case.

TIP: It would probably be advantageous to resize the session windows and place them in a specific position on the screen before saving the configuration. By doing this, each session will come up and place itself back in this position automatically.

Under the Display feature under options please set the screen as following:

To set the display format session, click on the “Options” pull down menu from the display Window.

Save the display file to desktop

Additional Changes to Client Access

You will need to start router and all display sections before the operator.

**You may need to change the length of the RU lengths for a twinax connection to decrease the packet size.*

1. From the Client Access Administration Tools select APPC Configuration
2. Double Click on “QPCSUPP” under the **M**odes window

- You will need to change the “RL Length for both the Send and Receive tabs to “480”
- Save each values by Clicking on OK button

Getting Help in Setting Up Client Access®

Online support is provides from the Client Access Software Screen as well as through www.Client Accesss.com.

Chapter 3 - Script Language Reference

ODT VISION® TO AS/400® CONNECTIVITY OPERATIONS	3-26
<i>AS/400® Connection</i>	3-26
<i>Screen Scraping</i>	3-27
<i>Cursor Movement</i>	3-28
<i>Field Attributes</i>	3-29
<i>Endif</i>	3-29
<i>Field Data Entry</i>	3-30
<i>Keyboard Input</i>	3-31
<i>Keyboard Mnemonics for SessionSendKeys Operation</i>	3-32
ODT VISION® TO AS/400® CONNECTIVITY SYSTEM VARIABLES.....	3-36
<i>Session Error variable</i>	3-36
<i>Session Indicator variables</i>	3-37
<i>Session Cursor variables</i>	3-38
<i>Session Field variable</i>	3-39
SUB-FILE REVIEW	3-39
AS400 TEST UTILITY	3-39
HELPFUL HINTS.....	3-40
ODT VISION® TO AS/400® CONNECTIVITY SYSTEM LIMITATIONS	3-40

ODT VISION® to AS/400® Connectivity operations

AS/400® Connection

Description: Manage connection between a phone line and an AS/400® emulation session.

Syntax:

SessionConnect *EHLLAPIShortName* Connect to an emulation session
SessionDisconnect Disconnect from the emulation session

Where:

EHLLAPIShortName A one-character name that is also used in the EHLLAPI configuration for the emulation session that this line will connect to.

Notes:

Each line script can connect to an emulation session that can provide information, or give information to a 5250 emulation session. These two operations control the connect and disconnect functions necessary to connect a script to an emulation session.

The **SessionConnect** operation actually connects the line script to a session that is assigned a EHLLAPI short name. This operation only needs to be executed once at the start of the script.

A **SessionDisconnect** operation is used to terminate the connection to the emulation session when the script is to be terminated. This is typically done based on the time of day, or from a "switch" operation. If a connection is made with the **SessionConnect** operation, the connection should also be terminated with the **SessionDisconnect** operation.

Example:

```
; This operation will terminate the AS/400 emulation connection whenever the local user
; turns on switch 1 from the Operator program main button bar. This is one way that a
; SessionDisconnect may be accomplished.
On Switch1 GoTo EndTheDay
:
:
; This is a routine that can be used to create a EHLLAPI short name for connecting a
; phone line to an emulation session. The name will be A for line 1, B for line 2.....
ShortName = LineNo + 64
ShortName = char ShortName
SessionConnect ShortName
If SessionErrorCode <> 0 Then
    beep
    MsgBox "AS/400 Emulation job is not started"
    MsgBox "or the ShortName for this line is"
    MsgBox "invalid. This script will terminate."
Endif
:
:
EndTheDay:
SessionDisconnect
End
```

Screen Scraping

Description: Assigns a variable the result of read of an emulation session display.

Syntax:

strvar = **SessionGetScreen** *row, col* (*,len*) Return an area of the display.

Where:

<i>row</i>	Numeric value of the row to receive.
<i>col</i>	Numeric value of the column to receive.
<i>len</i>	Numeric value of the length of the display session string.
<i>strvar</i>	The result variable that will be assigned the string value from the emulation display session.

Notes:

Row, col, and len are converted to a numeric value before performing the “screen scrape” Operation.

The result of the “screen scrape” Operation can be a user-defined variable, a file variable, or a read/write system variable. If the result variable is a user-defined variable, then the result variable data type will be converted to a string. If the result variable is a file variable or a read/write system variable, then the value will be converted to a variable type compatible with the result variable type.

See the section on variables for more information on variable conversions.

Example:

```
w = SessionGetScreen 1,30,17                   ; Read AS/400 display from line 1, column 30
                                              ; for a length of 17.
If w <> "Order Maintenance" Then
    beep
    MsgBox "ORDERS program was not started."
    MsgBox "This script will be terminated."
    End
Endif
```


Field Attributes

Description: Gives the system the ability to check for a field attribute by checking the hidden character, (generally the character before the start of a field) for displaying certain attributes.

Syntax:

SessionAttributes *row,col*

Where:

<i>Code</i>	Field Attributes Displayed:
<i>SessionMessageWait</i>	Same as SessionError
<i>ait</i>	
<i>SessionCS</i>	Column Separator
<i>SessionBL</i>	Blinking
<i>SessionUL</i>	Underline
<i>SessionRV</i>	Reverse Image
<i>SessionPR</i>	Field Protected
<i>SessionND</i>	Field Non-Displayed
<i>SessionHI</i>	Field is Displayed in High Intensity

Example:

; This example checks to see if field changes after value is keyed in
; If the field reverses image, keyed value is wrong

```

SessionSetCursor 5,4
SessionSendKeys CustInput           ; Enter the customer number
SessionSendKeys "[Enter]"           ; Enter Key
SessionWait
SessionAttribute 5,3                 ; Check field attribute

If SessionRV then                   ; data is bad
    ReturnCode = Play "BadDate.VOX" ;the data entered is bad
    GoTo ReqCustInfo                 ;loop back to ask for customer data
Endif

```

Field Data Entry

Description: Fills an input capable field on the AS/400 display with data.

Syntax:

SessionFillField *row,col,data*

Key the information from the *data* field into the AS/400 display at the position specified.

Where:

data String value of the information to key to the AS/400 display.
row Numeric value that specifies the row of the AS/400 input capable field.
start Numeric value that specifies the column of the AS/400 input capable field.

Notes:

Row and *col* are converted to a numeric value, and *data* is converted to a character value before the Operation is performed.

See the section on variables for more information on variable conversions.

SessionFillField is the way to get data from the script to the AS/400 display session input capable fields. This is a much faster method than using **SessionSendKeys** to fill in AS/400 input capable fields character by character. Also, since the row and column of the input capable field are specified right on the **SessionFillField** operation, no "movement" operations such as **SessionNextField** or **SessionPriorField** are needed.

Example:

```
SessionFillField 10,25,"30" ; key "30" on the display into the field  
;at row 10, col 25
```

Keyboard Input

Description: Transmits keystrokes to the AS/400 display session as if they were keyed by an operator.

Syntax:

SessionSendKeys *Keys* Send keystrokes in "Keys" to the AS/400 display session.

Where:

keys A character value that contains the keystrokes to be transmitted to the AS/400 display session.

Notes:

Keys are converted to a string value before the Operation is performed.

See the section on variables for more information on variable conversions.

Example:

```
; This example keys in the customer number obtained from the caller,
; then it passes another input capable field on the display and keys
; in the order number. Finally, the ENTER key is pressed to start
; the processing on the AS/400.
SessionSendKeys CustInput                      ; Enter the customer number
SessionNextField UnProtected                      ; Move to the next input capable field
SessionNextField UnProtected                      ; Move to the next input capable field
SessionSendKeys OrderInput                      ; Enter the Order number
SessionSendKeys "@E"                              ; Press the ENTER key to process
```

Keyboard Mnemonics for SessionSendKeys Operation

The following table displays the characters that are valid for the *keys* parameter when using the **SessionSendKeys** operation:

New Client Accesss Values	Old System Character	Function
[[] [] [@]	@@	Send @ key
[ATTENTION] [ATTN] [A]	@A@Q	Attention
[BACKSPACE] [BKSP] [V-] [BS]	@<	Backspace
[BACKTAB] [LEFTTAB] [BKTAB] [V=] [B]	@B	Backtab
[CLEAR] [CLR] [C]	@C	Clear
[DOWN] [V] [D]	@V	Cursor Down
[LEFT] [<] [L]	@L	Cursor Left
[RIGHT] [>] [R]	@Z	Cursor Right
[UP] [^] [U]	@U	Cursor Up
[DELETE] [DEL]	@D	Delete
[DUPLICATE] [DUP]	@S@X	Dup
[END]	@q	End
[ENTER] [E]	@E	Enter
[ERASEEOF]	@F	Erase EOF

[ERASEINPUT]	@A@F	Erase Input
New Client Accesss Values	Old System Character	Function
[FIELDEXIT] [FLDEXIT] FLDE] [F]	@A@E	Field Exit
[FIELD-] [-]	@A@-	Field -
[FIELD+] [+]	@A@+	Field +
[HELP]	@H	Help
[HOME] [H]	@0	Home
[INSERT] [INS] [I]	@I	Insert
[INSERTTOGGLE]	@A@I	Insert Toggle
[LOCALPRINT]	@P	Local Print
[NEWLINE] [NL]	@N	New Line
[PAGEUP] [PGUP] [PU]	@u	Page Up
[PAGEDOWN] [PGDN] [PD]	@v	Page Down
[PCPRINT]	@A@t	Print (PC)
[RECORDBACKSPACE] [RECBKSPACE] [RBS]	@A@<	Record Backspace
[RESET] [X]	@R	Reset
	@T	Tab
	@S	Shift
[SYSTEMREQUEST] [SYSREQ] [S]	@A@H	System Request
[CMD1] [PF1] [F1]	@1	F1
[CMD2] [PF2] [F2]	@2	F2
[CMD3] [PF3] [F3]	@3	F3

New Client Accesss Values	Old System Character	Function
[CMD4] [PF4] [F4]	@4	F4
[CMD5] [PF5] [F5]	@5	F5
[CMD6] [PF6] [F6]	@6	F6
[CMD7] [PF7] [F7]	@7	F7
[CMD8] [PF8] [F8]	@8	F8
[CMD9] [PF9] [F9]	@9	F9
[CMD10] [PF10] [F10]	@a	F10
[CMD11] [PF11] [F12]	@b	F11
[CMD12] [PF12] [F12]	@c	F12
[CMD13] [PF13] [F13]	@d	F13
[CMD14] [PF14] [F14]	@e	F14
[CMD15] [PF15] [F15]	@f	F15
[CMD16] [PF16] [F16]	@g	F16
[CMD17] [PF17] [F17]	@h	F17
[CMD18] [PF18] [F18]	@i	F18
[CMD19] [PF19] [F19]	@j	F19

New Client Accesss Values	Old System Character	Function
[CMD20] [PF20] [F20]	@k	F20
[CMD21] [PF21] [F21]	@l	F21
[CMD22] [PF22] [F22]	@m	F22
[CMD23] [PF23] [F23]	@n	F23
[CMD24] [PF24] [F24]	@o	F24
New 3270 Client Accesss Values	Old System Character	Function
[ALT]		ALT
[CURSORSELECT]		CURSOR SELECT
[FIELDMARK]		FIELD MARK
[SHIFT]		SHIFT
[PA1]		PAI
:		:
[PA10]		PA10

ODT VISION® to AS/400® Connectivity System variables

Session Error variable

Description: Returns the error code of the last ODT VISION to AS/400 connectivity operation.

Syntax:

SessionErrorCode Returns the numeric value of the error code of the last ODT VISION to AS/400 connectivity operation.

Notes:

The SessionErrorCode variable is read only.

Session Indicator variables

Description: Returns the value of the AS/400 session status indicators.

Syntax:

SessionSystemAvailable	Returns True if System Available is "on"
SessionSA	
SessionKeyboardShift	Returns True if the Keyboard Shift is "on"
SessionKS	
SessionInsertMode	Returns True if the Insert Mode indicator is "on"
SessionIM	
SessionMessageError	Returns True if System Error indicator is "on"
SessionER	
SessionInputInhibited	Returns True if the Input Inhibited indicator is "on"
SessionII	
SessionChanged	Returns True if the session display has changed since the last time the SessionChanged variable was checked.

Notes:

The Session indicator variables are read only.

Session Cursor variables

Description: Returns the current cursor position of the AS/400 display session.

Syntax:

SessionRow Returns the row number of the display session.

SessionCol Returns the column number of the display session.

Notes:

The SessionRow and SessionCol variables are read only.

Session Field variable

Description: Returns the length of the field on the AS/400 display session that the cursor is currently positioned on.

Syntax:

SessionFieldLength Returns the length of the current field.

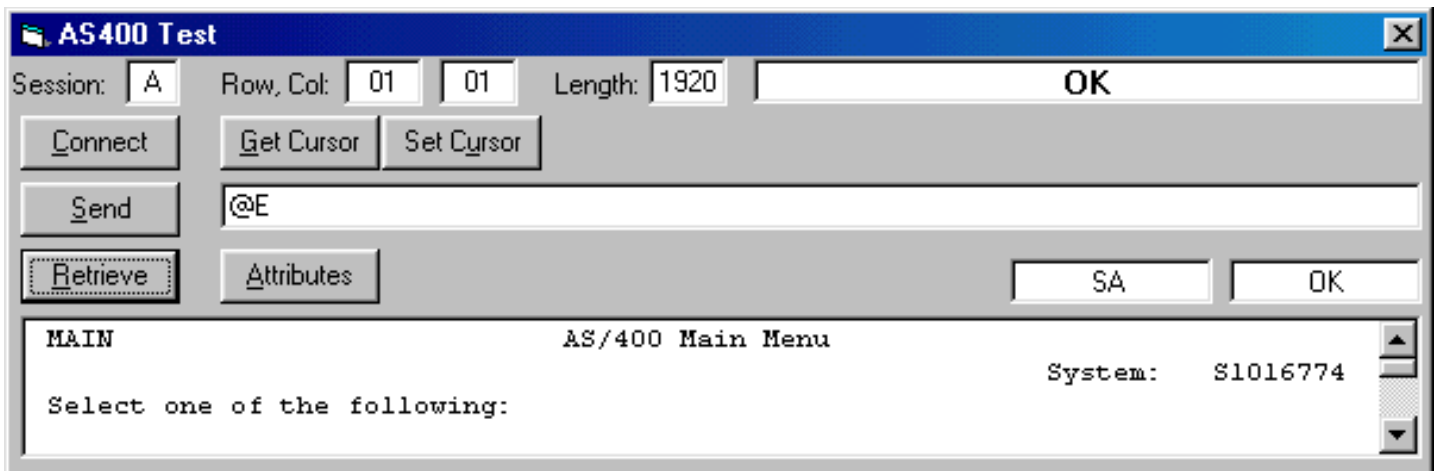
Notes:

The **SessionFieldLength** variable is read only.

Sub-File Review

x = SessionSubfileScan startRow, EndRow, Column width, ScanValue

AS400 Test Utility



- ⇒ Can check for connection to Display Session
- ⇒ Get Cursor Location
- ⇒ Set Cursor Location
- ⇒ Send Key Strokes Mnemonics
- ⇒ Retrieve portion of screen (1920 size of entire screen)

Helpful Hints

- ⇒ Rel 4.1 gives you the ability to test the ODT VISION system from any PC with Client Access connection to AS/400 and a Sound Blaster Card
- ⇒ Release 4.1 give the user the ability to record voice files on any sound blaster card as a “.wav” file and then convert it with the Voice Manager Utility
- ⇒ New AS/400 test utility in ODT VISION Program Group give you instant testing ability for you HLLAPI connection
- ⇒ After Any keyboard function which would require a screen change add “SessionWait”
- ⇒ During the Signon add a “Wait 2” Statement
- ⇒ Add wait statement to script for the amount of time it takes to get AS/400 connection if you have set you system up to run off of a scheduler or the start program group
- ⇒ Keyboard Mnemonics can be either the traditional Hex Codes or new English Verb. All must be in quotes with the English Verbs also in Brackets
- ⇒ If converting any old script files for rel 4.1, please recompile the script with the new recorder...(You will need to re-record the voice files and change the script’s voice file extensions from “.voc” to “.vox”

Example:

; This example of a sign on

```

SessionSendKeys "UserID"           ; Enter the User ID Vale
SessionSendKeys "[FieldExit]"      ;Field exit
SessionSendKeys "Password"        ;Enter Password Vale
SessionSendKeys "[Enter]"         ; Enter Key
SessionWait
Wait 2
SessionSendKeys "[Enter]"         ; go pass dual signon warning screen
SessionWait

```

ODT VISION® to AS/400® Connectivity system limitations

The following additional limitations are placed on the ODT VISION system when the ODT VISION to AS/400 connectivity options are used.

Maximum number of phone processing lines using the AS/400 connection is 12

This number may be limited by other factors in your system, such as available memory, the speed of your system, or limitations of the operating system.

ODT VISION® to AS/400® Connectivity Error Conditions

Error Codes

Errors	Condition
0	OK
1	Not Connected (invalid presentation space or session not active)
2	Parameter Error
4	Busy
5	Input Inhibited
6	Truncated
7	Position Error
8	Not Available
9	System Error
11	Unavailable
20	Undefined Key
21	OIA Update
22	PSU Update
23	Both Update
24	No Field
25	No Keystrokes
26	PS Changed
31	Key Overflow
98	Not Attribute
99	Invalid ShortName
1024+	Other Internal Errors